

IDC4E software update

TRUCK 39.0.0



NEW DIAGNOSTIC FEATURES - NORTH AMERICAN MARKET

The new features for the North American market are very interesting, thanks to important diagnostic developments connected to the most common makes and models such as Isuzu, Hino, Mitsubishi Fuso, Detroit Engine, International, Freightliner and many more.

Starting from the TRUCK 39 version, the VIN Scan and HD ScanTool functions have been improved. Another important news is the enhancement of the SOLVED PROBLEMS function.

VIN SCAN

The **VIN Scan** function was improved for the Heavy-Duty environment, now applied to all the manufacturers.

HD SCANTOOL

The function was improved and the number of control units that can be analyzed was increased.

Allison:

- The **Generation 5** system for the 2017 EPA13 vehicles was updated.

Isuzu:

- The new model Isuzu 2017 5.2 Diesel was added.

Hino:

- New **Aisin automatic transmission** system.
- New **Denso Common Rail EPA 98/04 injection** system for the Hino Truck Series 3000.
- The **Denso Common Rail injection** system error list was updated.
- The **SCR Burner Control Unit (BCU) EPA 07/10/13 injection** system error list was updated.
- The **VCS Vehicle Control System** error list was updated.

Mitsubishi Fuso:

- The **Denso Common Rail EPA7 injection** system

was updated and the following functions were added:

DPF learning data reset

Ash quantity data reset

Transmission adaptation data reset

SCR data reset

Engine oil data reset

Injection data reset

Reset of the EGR valve learning values

Oxygen sensor data reset

Rail pressure data reset

Air mass flow data reset

VGT data reset

Boost pressure reset

Catalyst NOx data reset

DPF differential sensor data reset

DEF system data reset

- New **Aisin automatic transmission** system with K-Line and CAN-Line communication protocols.

Detroit - MBE:

- The **EPA 98/04 injection** system was updated and the **trip data reading** function was added.
- The **EPA 13 injection** system was updated for the **2017** vehicles.

Mercedes-Benz/Freightliner:

- The **CRD3 injection** system was updated for the OM651 engines and the **static regeneration and on-road regeneration** were added.

International:

- The **Body controller Gateway** system was updated and the parameter reading for new variants was improved.

Cummins:

- The **Core 1 J1708/J1587** system was updated, the idle stop and multiplexing parameterisations were implemented.
- The **Core 2** system was updated for the **2017 EPA13** vehicles.

Wabco:

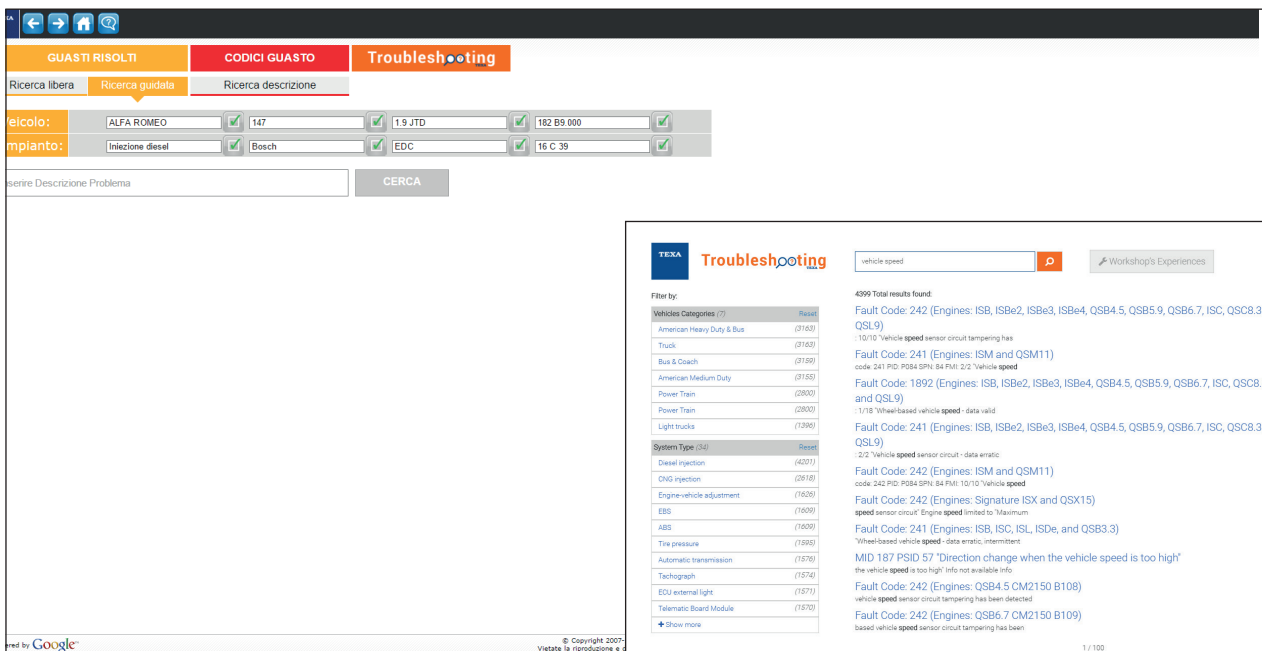
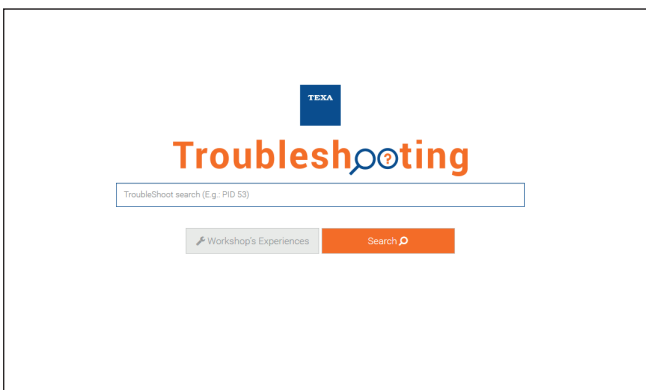
- The **Wabco D ABS** was updated completely.
- A new diagnostic system was developed for the **HPB ABS** control unit.
- The diagnosis was added to trailers with the **PLC** protocol.

SOLVED PROBLEMS NEW FEATURE: TROUBLESHOOTING

With the release of the TRUCK 39 version, the "SOLVED PROBLEMS" function, that can be used directly from IDC4E, has as a different layout offering more support with problem solving.

SOLVED PROBLEMS is now divided into:

- **Troubleshooting**, that is the logical and systematic search for the cause of a problem, the analysis of the symptoms and suggested solutions
- **Workshop experience**, where you can find practical solutions that resulted from the consultations of tens of thousands TEXA customers worldwide with our Call Centers. In particular, makes such as Cummins, Detroit and Volvo were enhanced with helpful problem solving contents in this version.



NEW DASHBOARDS

For the TRUCK 39 version, the following DASHBOARDS were included:

- injection system for Hino vehicles.
- injection system for Mitsubishi Fuso vehicles.



NEW WIRING DIAGRAMS

Mitsubishi Fuso Canter 4M50:

- ABS, EPA98 Diesel injection, EPA04 injection, Aisin automatic transmission systems.

Mitsubishi Fuso Canter 4P10:

- ABS systems.
- air conditioning.
- immobiliser.
- EPA04/07 Diesel injection.
- EPA07/10/13 Diesel injection.
- instrumentation.

Volvo Trucks FH12/FM12/FM9/FH16/NH12/FH/FM/VHD:

- lighting system.

Volvo Trucks FMX:

- FCIOM system.

Volvo Trucks FH16:

- ABS.

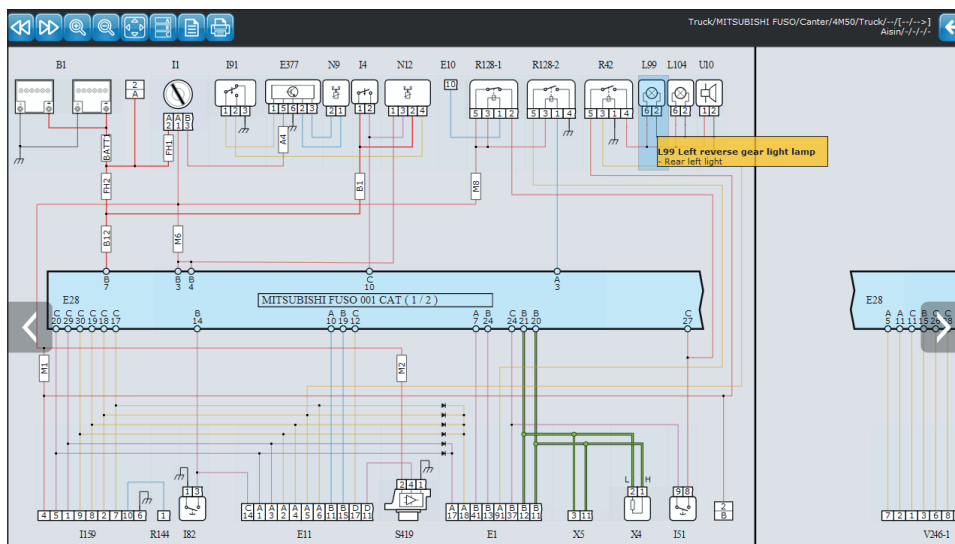
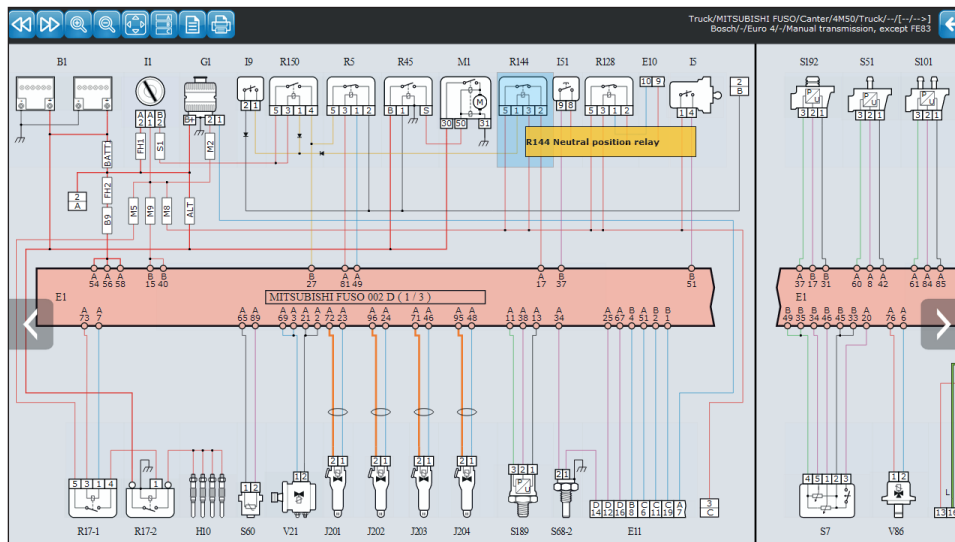
Thermoking:

- refrigeration system.

Cummins:

- Cummins ISBe2-3 CM850, ISBe4, ISL, ISC CM2150, ISC 8.3 CM2250, ISF 2.8-3.8 CM2220, ISM CM850 Diesel injection systems.

For further details on these functions and on their applicability to vehicles, visit:
www.texausa.com/coverage



COMPATIBILITY OF TEXA'S IDC4E SOFTWARE AND THE NEW WINDOWS 10 OPERATING SYSTEM

In order to make the IDC4E software compatible with the new software technologies introduced by Microsoft in the new Windows 10 operating system, we wish to inform you that:

- for the 64-bit version of Windows 10 the IDC4E versions CAR 60, TRUCK 38, BIKE 25, MARINE 11, OHW 14 are compatible and can be installed.

- for the 32-bit version of Windows 10 the IDC4E versions CAR 60, TRUCK 39, BIKE 25, MARINE 11, OHW 14 can be installed but some accessory software functions are still not guaranteed.

For this reason, we recommend staying connected to the Internet in order to receive the updates. If upgrading the PC from Windows 7 or 8 to the 32-bit version of Windows 10 with IDC4E already, it must be reinstalled at the end of the transfer.

EXTENDED COVERAGE OF MAKES

VERSION 39

TRUCK

E-ONE
FODEN
FORD
FREIGHTLINER
GMC
HINO
INTERNATIONAL
ISUZU (North America)
IVECO
KENWORTH
MACK
MAN
MITSUBISHI
FUSO
PETERBILT
STERLING
UD TRUCKS (NIS-SAN DIESEL)
VOLVO TRUCKS
WESTERN STAR

BUS

ALLEGRO
BLUE BIRD
TEMSA
VAN HOOL
VOLVO BUS

LIGHT VEHICLES

DODGE
FORD
MERCEDES-BENZ
NISSAN

TRAILER AND SEMI TRAILERS

HALDEX
MERITOR - WABCO
THERMOKING

POWER TRAIN

ALLISON
CATERPILLAR
CUMMINS
DETROIT
DEUTZ
EBERSPACHER
FPT (IVECO MOTORS)
INTERNATIONAL
MERCEDES-BENZ
PACCAR
SCANIA
VM MOTORI
VOITH
VOLVO PENTA
ZF
WEBASTO
WABCO

LEGEND

	Brands that offer updates in this version		Brands that do not offer updates in this version
--	---	--	--

This document is strictly confidential. All copying, in part or in whole, is strictly forbidden without the prior authorisation of TEXA S.p.A. Future specifications, descriptions and appearances may vary with respect to this brochure. TEXA S.p.A. reserves the right to modify its products without prior notice.

WARNING

The trademarks and logos of vehicle manufacturers in this document have been used exclusively for information purposes and are used to clarify the compatibility of TEXA products with the models of vehicles identified by the trademarks and logos. Because TEXA products and software are subject to continuous developments and updates, upon reading this document they may not be able to carry out the DIAGNOSTICS of all the models and electronic systems of each vehicle manufacturer mentioned within this document. References to the makes, models and electronic systems within this document must therefore be considered purely indicative and TEXA recommends to always check the list of the "Systems that can be diagnosed" of the product and/or software at TEXA authorized retailers before any purchase. **The images and the vehicle outlines within this document have been included for the sole purpose of making it easier to identify the vehicle category (car, truck, motorbike, etc.) for which the TEXA product and/or software is intended.** The data, descriptions and illustrations may change compared to those described in this document. TEXA S.p.A. reserves the right to make changes to its products without prior notice.



texausa.com



northamerica@texa.com



facebook.com/texacom



twitter.com/texacom



youtube.com/texacom



instagram.com/texacom



linkedin.com/company/texa



plus.google.com/+TEXAcom

TEXA

COMPANY WITH
QUALITY SYSTEM
CERTIFIED BY DNV
= ISO 9001 =

The BLUETOOTH brand is the property of Bluetooth SIG, Inc., U.S.A., and is used by TEXA S.p.A. under license.

Copyright TEXA S.p.A. - 05/2016 - NA

MADE IN ITALY

