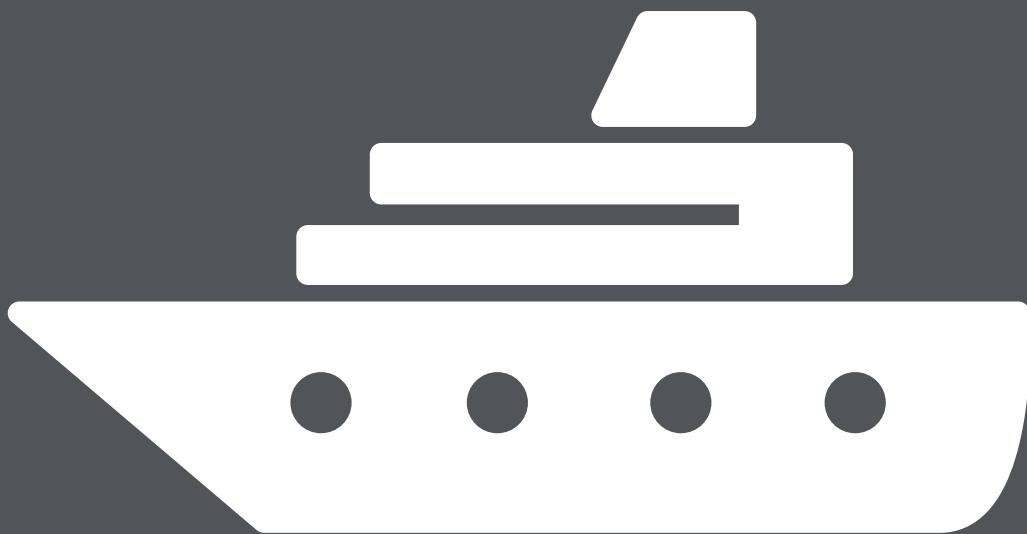


Software update

MARINE 11



IDC4E MARINE SOFTWARE UPDATE VERSION 11.0.0

The **V11 IDC4E MARINE** has been developed to include technical data and additional functions, in one diagnostic solution.

With the version 11 release, the IDC4E software introduces two new features: the **QUICK DIAGNOSIS** function and the innovative **Nominal Values** for guided diagnosis.

DIAGNOSIS DEVELOPMENTS

The V11 MARINE now covers 38 makes and over 700 models. Below we will list some of the most important developments and updates included in this version and highlight the introduction of the makes CFMOTO, DAEDONG and FORD MARINE.

CFMOTO

New brand. The diagnosis of the injection of the engine "CF3100C/P" was included.

DAEDONG

New brand. The diagnosis of the injection of the engine "D4DD" was included.

FORD MARINE

New brand. The diagnosis of the injection of the engine "3.2 Duratorq" was included.

INDMAR

The database was updated and the diagnostics were improved.

STEYR MOTORS

The diagnosis of the injection of the engines "SE126E25", "SE156E26", "SE196E35", "SE236E40", "SE236S36", "SE266E40",

"SE266S36", "SE286E40" and "SE306J38" was included. The diagnosis of these engines requires the new diagnostic cable AM32 (see chapter NEW DIAGNOSTIC CABLES).

VM MOTORI

The diagnosis of the injection of the engines "MD704LH", "MD704LI", "MD704LS", "MD706LB", "MD706LH", "MD706LI", "MD706LS", "MD706LX", "MD706MS" and "MD706MX" was included.

YAMAHA MARINE

The diagnosis of the injection of the new engines "F115", "F175", "F200", "VF115", "VF150" and "VF175" was included.

SEA-DOO (BRP)

The database and the diagnostic coverage were updated up to 2015.

It is important to highlight that, TEXA also offers additional technical information such as technical sheets, bulletins and wiring diagrams that are updated and extended with each SW update.

Inside IDC4E, you can check out all the new features in the DOCUMENTATION menu. There, you will find details of all the makes, models, systems and the related diagnostic functions introduced in this version.

We remind you that the BASIC activation offers the diagnostic coverage of all the makes that

belong to the "PWC Personal Watercrafts" and "Outboard engines" categories. It also guarantees the coverage of the makes Cummins Mercruiser Diesel, Mercruiser, Mercury Diesel, Mercury Racing and Volvo Penta of the "inboard engines" category.

To gain the maximum diagnostic coverage, including the complete "inboard engines" category and the "industrial engines/generators" category, you must activate the PLUS integration.

NEW DIAGNOSIS CABLES

Starting from this version, this new cable is available in the MARINE price list: **AM32**.

Terminal cable for the serial diagnosis of the STEYR inboard engines of the "SE" series (to be used with the AM01 CAN cable).



For further details on these functions and on their applicability to vehicles, visit:
www.texausa.com/coverage

NEW SOFTWARE FEATURES

QUICK DIAGNOSIS

A completely new feature of the IDC4E software: this new function allows you to access the diagnosis quickly by reducing the number of clicks which guarantees the correct vehicle diagnosis. This way the usual selections needed to diagnose a vehicle, by selecting the make, model, engine code, year of manufacture and finally the system, are no longer needed.

You just have to click on the button related to the function, located near the make, and connect the diagnostic tool to the vehicle.

Based on the vehicle, its equipment and the diagnostic cable used, the software will access the injection system directly or it will carry out a scan indicating the systems that are available, with the option of a specific diagnosis

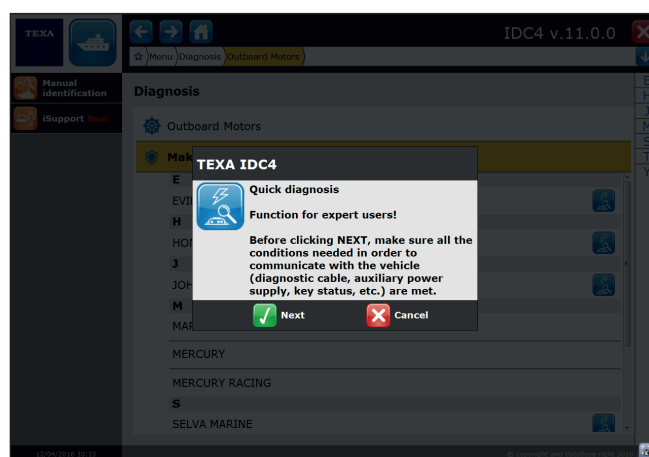
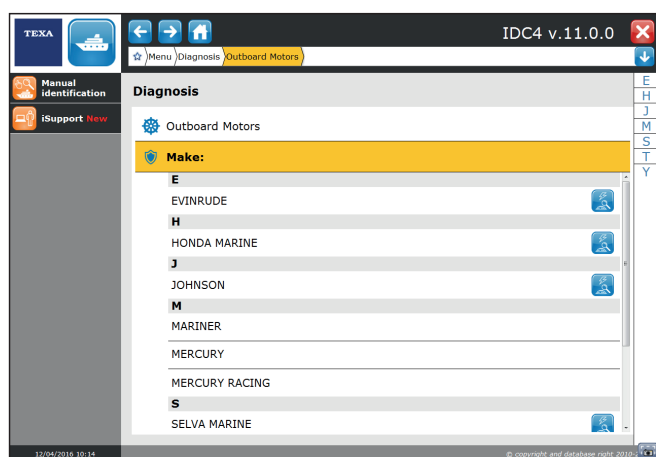
NOTE

The function is available for the manufactures listed below and we recommend its use to expert users only, as extensive knowledge regarding the vehicles being analysed and the use of diagnostic instrumentation is required. The quick diagnosis may not detect particular systems that require a different diagnostic cable rather than the one used for the rest of the equipment. In these specific cases, we recommend the classic diagnosis, selecting the system manually.

Outboard engines: EVINRUDE, HONDA MARINE, JOHNSON, SELVA MARINE, SUZUKI MARINE and YAMAHA MARINE.

Inboard engines: SISU

PWC (Personal Water Crafts): KAWASAKI MARINE and SEA-DOO (BRP)



NOMINAL VALUES

"Nominal Values" aims to supply the mechanic with additional detailed information, useful to solve a fault detected during the self-diagnosis. The sheets include the reference values for each single electronic component associated to the self-diagnosis and the related solutions for solving possible faults.

This information can be accessed directly during the self-diagnosis, in the DOCUMENTATION section and is divided by system and specific device or fault code, in order to make the search easier and more intuitive.

TEKA

Menu

Diagnosis

Inboard motors

VOLVO PENTA

D6 EVC

5500 cc

Inboard engine

[-/-->]

Manual Identification

Self-diagnosis

Special Functions

Wiring Diagrams

Technical data sheets

Nominal values

Customer management

ISupport New

Self-diagnosis

Diagnosis by system

Diesel injection

Eng

Inst

TEKA IDC4

The 'Nominal values' App has been activated correctly. Please remember that this function can be used only with a diagnosis in progress in the 'Technical documentation' section, where it is available.

OK

Technical Documentation

Inboard motors/VOLVO PENTA/D6 EVC/5500 cc/Inboard engine/[-/-->]

Diesel injection

Nominal value sheets

12/02/2015 ENGINE MANAGEMENT ELECTRONIC CONTROL UNIT

12/02/2015 CYLINDER 2 MAGNETIC COMMON RAIL INJECTOR

11/30/2015 OIL PRESSURE SENSOR

11/30/2015 HIGH-PRESSURE FUEL FLOW CONTROL SOLENOID VALVE

11/30/2015 PRESSURE RELIEF VALVE

11/26/2015 CYLINDER 5 MAGNETIC COMMON RAIL INJECTOR

11/26/2015 STARTER MOTOR

11/26/2015 CYLINDER 3 MAGNETIC COMMON RAIL INJECTOR

11/26/2015 CYLINDER 4 MAGNETIC COMMON RAIL INJECTOR

11/26/2015 CLUTCH ENGAGEMENT MAGNET

COMMON RAIL INJECTOR

COMMON RAIL INJECTOR

DTC

Meaning

MID 128 SID 2 Cylinder 2 injector

All the tests must be performed with the engine off

Cylinder 2 magnetic common rail injector [malfunction] - D3 engines

Carry out the following continuity tests between the engine management control unit's wiring connector and the component's wiring connector.

Table 1

	Test conditions	Probes	Test Values	Result	Cause
1	Key in "OFF" position Component disconnected	Pin-52 (+) Bl-Bk (-)	Continuity	Present	See the following point on the table
2	Key in "OFF" position Component disconnected	Pin-70 (+) Bl-Bk (-)	Continuity	Present	See the following point on the table
3	Key in "OFF" position Component disconnected	Pin-51 (+) Bl (-)	Continuity	Present	See the following point on the table
4	Key in "OFF" position Component disconnected	Pin-69 (+) Bl (-)	Continuity	Present	See table 2

COMPATIBILITY OF TEXA'S IDC4E SOFTWARE AND THE NEW WINDOWS 10 OPERATING SYSTEM

In order to make the IDC4E software compatible with the new software technologies introduced by Microsoft, in the new Windows 10 operating system, we wish to inform you that:

- for the **64-bit version of Windows 10** the IDC4E versions **CAR 60, TRUCK 38, BIKE 25, MARINE 11, OHW 14** are compatible and can be installed.

- for the **32-bit version of Windows 10** the IDC4E versions **CAR 60, TRUCK 39, BIKE 25, MARINE 11, OHW 14** can be installed but some accessory software functions still cannot be guaranteed. For this reason we recommend ensuring that you are connected to the Internet in order to receive any updates.

If you are upgrading a PC from Windows 7 or 8 to the **32-bit version of Windows 10** with IDC4E already installed, it will require reinstallation at the end of the procedure.

EXTENDED COVERAGE OF MAKES

VERSION 11

JETSKIS

HONDA MARINE
KAWASAKI MARINE
MERCURY
PWC
SEA-DOO (BRP)
YAMAHA MARINE

INBOARD MOTORS

CATERPILLAR
CFMOTO
CRUSADER ENGINES
CUMMINS MERCURISER
CUMMINS MERCURISER
DIESEL
DAEDONG
DAF MARINE
DIESEL
FNM MARINE
FORD MARINE
FPT (Fiat Powertrain Technologies)
HYUNDAI SEASALL
ILMOR
INDMAR
LOMBARDINI MARINE
MERCURISER
MERCURY
MERCURY DIESEL

MERCURY RACING
MTU
PCM MARINE ENGINES
PERKINS
SEA-DOO
SISU
STEYR MOTORS
VM MOTORI
VOLKSWAGEN MARINE
VOLVO PENTA
YANMAR

SUZUKI MARINE
TOHATSU OUTBOARDS
YAMAHA MARINE

ENGINES

VM MOTORI

INDUSTRIAL ENGINES/ GENERATORS

KOHLER
MTU

OUTBOARD MOTORS

EVINRUDE
HONDA MARINE
JOHNSON
MARINER
MERCURY
MERCURY RACING
SELVA MARINE

LEGEND

	Brands that offer updates in this version		Brands that do not offer updates in this version
--	-------------------------------------------	--	--------------------------------------------------

This document is strictly confidential. All copying, in part or in whole, is strictly forbidden without the prior authorisation of TEXA S.p.A. Future specifications, descriptions and appearances may vary with respect to this brochure. TEXA S.p.A. reserves the right to modify its products without prior notice.

WARNING

The trademarks and logos of vehicle manufacturers in this document have been used exclusively for information purposes and are used to clarify the compatibility of TEXA products with the models of vehicles identified by the trademarks and logos. Because TEXA products and software are subject to continuous developments and updates, upon reading this document they may not be able to carry out the DIAGNOSTICS of all the models and electronic systems of each vehicle manufacturer mentioned within this document. References to the makes, models and electronic systems within this document must therefore be considered purely indicative and TEXA recommends to always check the list of the "Systems that can be diagnosed" of the product and/or software at TEXA authorized retailers before any purchase. **The images and the vehicle outlines within this document have been included for the sole purpose of making it easier to identify the vehicle category (car, truck, motorbike, etc.) for which the TEXA product and/or software is intended.** The data, descriptions and illustrations may change compared to those described in this document. TEXA S.p.A. reserves the right to make changes to its products without prior notice.



www.texausa.com



northamerica@texa.com



www.facebook.com/texausa



www.twitter.com/texacom



www.youtube.com/texacom

TEXA

The BLUETOOTH brand is the property of Bluetooth SIG, Inc., U.S.A., and is used by TEXA S.p.A. under license.

Copyright TEXA S.p.A. - 04/2016 - NA

MADE IN ITALY

